

# Lutz Pump Sets

## 9 Pump Set „Solvents“ for complete drum drainage (stainless steel)

### For easily flammable hydrocarbons

such as ethanol, gasoline, butanol, isopropanol, kerosene, methanol and petroleum.

- **Motor ME II 3**, 460 W or optionally with
- **Compressed air motor MD2xL**, 1000 W / 6 bar

Explosion proof according to ATEX Directive 2014/34/EU, category 2.

#### Motor ME II 3

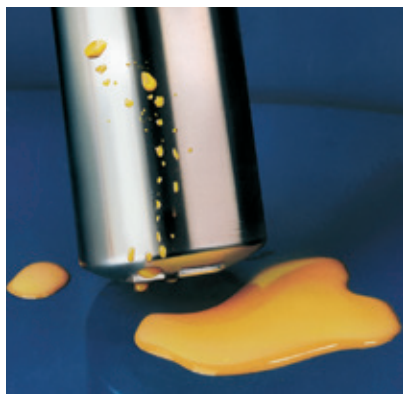
Density (kg/dm <sup>3</sup> )	Viscosity (mPas)	Delivery rate (l/min.)	Delivery head (m wc)
1.6	500	77 (45)	14

#### Motor MD2xL

Density (kg/dm <sup>3</sup> )	Viscosity (mPas)	Delivery rate (l/min.)	Delivery head (m wc)
2,8	1000	67 (40)	28

Max. temperature of medium 100 °C

Specified values are maximum values determined with water at 20°C, measured directly at the pressure joint. Viscosity determined with oil. When using a nozzle the delivery rate is reduced to approximate values (see brackets).



### Complete drainage

Residual quantity < 0.10 litres

### Pump Set Solvents

with motor ME II 3

#### Motor ME II 3

The **explosion proof** universal motor ME II 3 is ideally suitable for transferring of many thin-bodied, easily flammable and combustible liquids.

### Pump Set Solvents

with Motor MD2xL, The compact compressed air motor is powerful and reliable.



For complete drainage of drums and containers	Pump with motor ME II 3		Pump with motor MD2xL		Set with motor ME II 3		Set with motor MD2xL	
	1000 mm	1200 mm	1000 mm	1200 mm	1000 mm	1200 mm	1000 mm	1200 mm
Pump tube RE-SS 41-L-MS	✓		✓		✓		✓	
2 m solvent hose 3/4" *	-		-		✓		✓	
Drum adapter PP	-		-		✓		✓	
2 m equipotential bonding cable	✓		✓		✓		✓	
Nozzle brass	-		-		✓		✓	
Immersion depth	1000 mm	1200 mm	1000 mm	1200 mm	1000 mm	1200 mm	1000 mm	1200 mm
Order No.	0205-505	0205-506	0205-545	0205-546	0205-501	0205-502	0205-541	0205-542

\*electrically conductive bound with hose connectors brass.